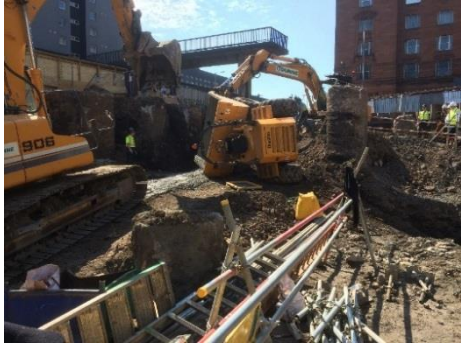


SafetyAlert

Overturned Plant

What Happened?

On two separate occasions we have experienced plant overturning due to a number of reasons. We are most fortunate that no one was injured on either occasions.



Background Information

During the movement of both pieces of plant on site they experienced inadequate access, egress and a loss of traction. A dumper overturned due to overloading with concrete and ground conditions incapable of coping with the load. A MEWP was driven down an access ramp to site and unknowingly a wheel ran over the edge of the ramp causing the MEWP to slip into the excavation.

Learning from the Incident

- Ensure access egress for all site traffic is well compacted with no signs of slippage
- Raised levels or ramps are to be graded as where reasonably practicable to ensure incline and declines are not at an unsafe angle.
- CPCS cards to be in place for all plant operators on site.
- Don't just assume.... regularly check that plant operatives are competent with the environment to safely control their machine.
- When possible employ the help of a designated traffic marshal to liaise with site management any existing or foreseeable problems with traffic movement on site.